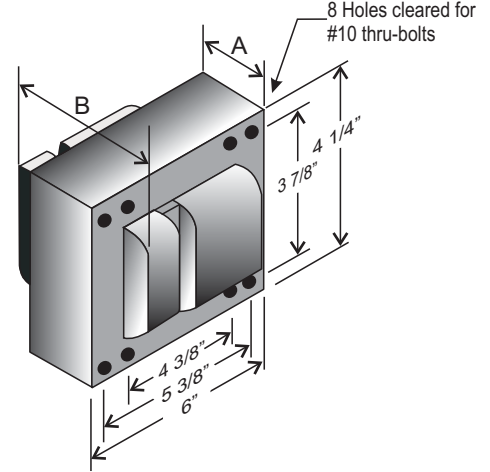


## CATALOG NUMBER: E-871-WDD-211 FOR ONE 1000 WATT, M47 METAL HALIDE LAMP

Line Voltage	120/208/240/277/480 V
Regulation	
Line Volts	+/-10%
Lamp Watts	+/-10%
Frequency	60 Hz
Circuit Type	CWA
Power Factor (min)	90%
Insulation Class	H(180°)
Min. Ambient Starting Temp.	-20° F or -30° C

Line Voltage (Volts)	120	208	240	277	480
Line Current (Amps)					
Operating	9.2	5.3	4.6	4.0	2.30
Open Circuit	5.6	3.5	2.85	2.6	1.5
Starting	6.6	3.8	3.3	2.9	1.7
Input Watts (W)	1080	1080	1080	1080	1080
Open Circuit Voltage (V)	420	420	420	420	420
Drop Out Voltage (V)	78	125	150	180	295
UL(1029) Bench Top Rise	D	B	B	B	B
Recommended Fuse (Amps)	20	15	10	10	10
HIGH POTENTIAL TEST (VOLTS)					
1 Minute	2000				
2 Seconds	2500				
Open Circuit Voltage Test (volts)	385-455				
Short-Circuit Current Test (Amps)					
Secondary Current	5.20 - 6.00	5.65 -	3.15 -	2.85 -	2.40 -
Input Current (Amps)		7.30	4.30	3.70	3.22
				1.37 -	1.85

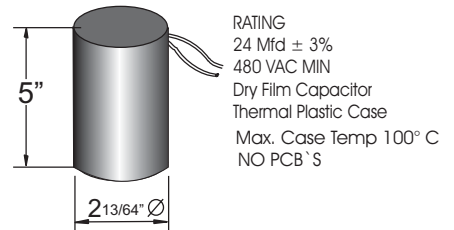
### 4 1/4" x 6" CORE



### CORE AND COIL

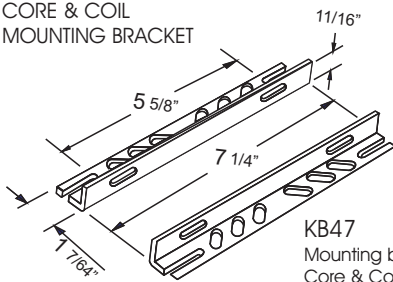
Dimension A (inches)	3.00
Dimension B (inches)	5.10
Weight (Lbs)	24.00
Lead Lengths (inches)	12

### CAPACITOR

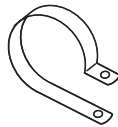


### BRACKET

CORE & COIL  
MOUNTING BRACKET

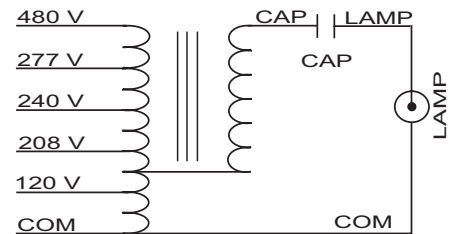


KB47  
Mounting bracket for  
Core & Coil Ballasts  
(2 brackets with thru bolts)



C-01  
MOUNTING CLIP for round case (Furnished as standard with B suffix ballast)

### WIRING DIAGRAM



120/208/240/277/480 VOLT CONNECTION

### ORDERING INFORMATION

\*\*\* Add proper suffix to catalog number when ordering as indicated below:

- No suffix = Core and Coil Only
- B = Core and Coil, and Bracket
- C = Core and Coil, and Capacitor
- BC = Core and Coil, Capacitor and Bracket

Data is based upon tests performed by Industrias Sola Basic in a controlled environment and representative of relative performance. Actual Performance can vary depending on operating conditions. Specifications are subject to change without notice.

ISO 9001:2000



Made in Mexico by Industrias Sola Basic S.A de C.V.